

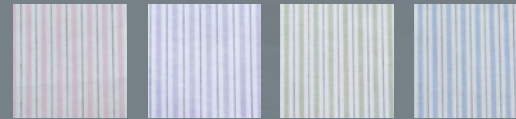


CORPORATE COLLECTION

Tailored from quality fabrics, the **Corporate/Hospitality Collection** showcases a fresh vision of professionalism and style. Core essentials are available to fulfil your basic requirements. Designed to be both fashionable and versatile, offering you the flexibility from the office to evening events. Co-ordinated styles are available in a wide range of colours, plains and prints.

This collection is ideal for the vital styling needed in projecting your company image.

colour and fabric range



Please note that the colours shown here may vary from actual fabrics due to limitations of the printed colour.

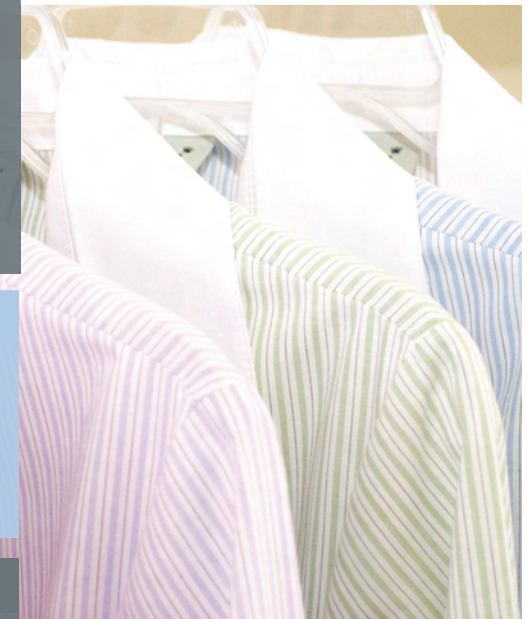
style lab

Build your best working wardrobe in the Duchess Style Lab, choose 9 garments and get 23 outfits.

See Duchess Style Lab in this brochure

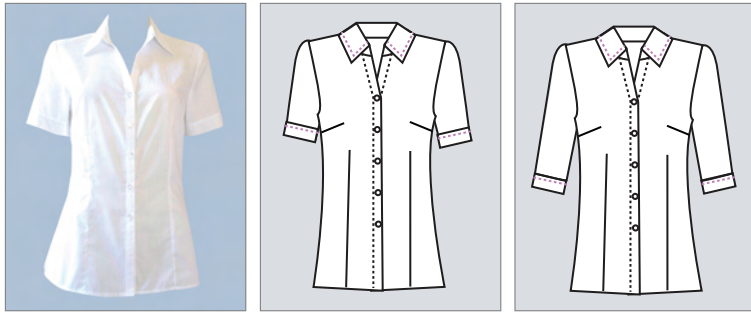
sizing

Use our ladies' and men's sizing charts, to work out your correct size when placing an order.



DUCHESS 

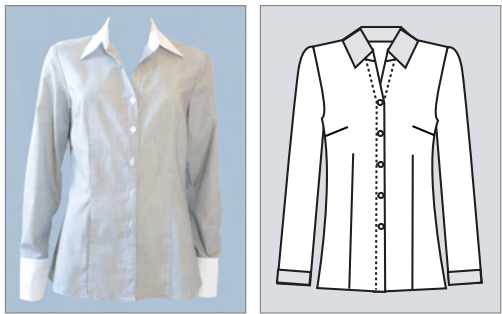
VOLUME 2



01 **DONNA** fitted shirt

- woven and stretch fabric
- short sleeve, half sleeve and long sleeve
- available with or without top stitching

FABRIC	COLOURS
PLATINUM PRINTS	[Red, Blue, Black, White, Grey, Navy, Olive, Pink, Purple, Green, Yellow, Orange, Silver, Gold]
COTTON RICH STRIPES	[Blue, Green, Purple, Grey, Black, White, Navy, Olive, Pink, Purple, Green, Yellow, Orange, Silver, Gold]
PLAIN POLYCOTTON	[Pink, Purple, Green, Blue, Grey, Black, White, Navy, Olive, Pink, Purple, Green, Yellow, Orange, Silver, Gold]
COTTON RICH SELF STRIPES	[Grey, Black, Navy, Olive, Pink, Purple, Green, Yellow, Orange, Silver, Gold]
COTTON RICH STRETCH	[Grey, Black, Navy, Olive, Pink, Purple, Green, Yellow, Orange, Silver, Gold]
PLAIN POLYESTER	[Pink, Blue, Black, White, Navy, Olive, Pink, Purple, Green, Yellow, Orange, Silver, Gold]



01 **DONNA C** fitted shirt

- woven fabric
- long sleeve
- with contrast trim

FABRIC	COLOURS
COTTON RICH STRIPES	[Blue, Green, Purple, Grey, Black, White, Navy, Olive, Pink, Purple, Green, Yellow, Orange, Silver, Gold]
PLAIN POLYCOTTON	[Pink, Purple, Green, Blue, Grey, Black, White, Navy, Olive, Pink, Purple, Green, Yellow, Orange, Silver, Gold]



02 **BRIONY** fitted shirt

- woven fabric
- short sleeve and long sleeve
- pintuck shirt

FABRIC	COLOURS
PLAIN POLYCOTTON	[Pink, Purple, Green, Blue, Grey, Black, White, Navy, Olive, Pink, Purple, Green, Yellow, Orange, Silver, Gold]
COTTON RICH SELF STRIPES	[Grey, Black, Navy, Olive, Pink, Purple, Green, Yellow, Orange, Silver, Gold]
PURE COTTON	[Grey, Black, Navy, Olive, Pink, Purple, Green, Yellow, Orange, Silver, Gold]



03 **ROSELINA** fitted shirt

- woven and stretch fabric
- 3/4 sleeve

FABRIC	COLOURS
PLATINUM PRINTS	[Red, Blue, Black, White, Grey, Navy, Olive, Pink, Purple, Green, Yellow, Orange, Silver, Gold]
COTTON RICH STRIPES	[Blue, Green, Purple, Grey, Black, White, Navy, Olive, Pink, Purple, Green, Yellow, Orange, Silver, Gold]
PLAIN POLYCOTTON	[Pink, Purple, Green, Blue, Grey, Black, White, Navy, Olive, Pink, Purple, Green, Yellow, Orange, Silver, Gold]
COTTON RICH SELF STRIPES	[Grey, Black, Navy, Olive, Pink, Purple, Green, Yellow, Orange, Silver, Gold]
COTTON RICH STRETCH	[Grey, Black, Navy, Olive, Pink, Purple, Green, Yellow, Orange, Silver, Gold]
PLAIN POLYESTER	[Pink, Blue, Black, White, Navy, Olive, Pink, Purple, Green, Yellow, Orange, Silver, Gold]



04 **EMELDA** classic fit shirt

- woven and stretch fabric
- 3/4 sleeve

FABRIC	COLOURS
PLATINUM PRINTS	[Color swatches: red, blue, grey, black, white]
COTTON RICH STRIPES	[Color swatches: various stripes]
PLAIN POLYCOTTON	[Color swatches: pink, purple, green, blue, brown, white]
COTTON RICH SELF STRIPES	[Color swatches: grey, black, dark blue]
COTTON RICH STRETCH	[Color swatches: grey, black, white]
PURE COTTON	[Color swatches: white]
PLAIN POLYESTER	[Color swatches: pink, blue, black, white]



05 **SHIREEN** classic fit shirt

- woven and stretch fabric
- 3/4 sleeve
- tie back

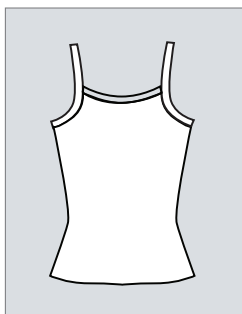
FABRIC	COLOURS
PLATINUM PRINTS	[Color swatches: red, blue, grey, black, white]
COTTON RICH STRIPES	[Color swatches: various stripes]
PLAIN POLYCOTTON	[Color swatches: pink, purple, green, blue, brown, white]
COTTON RICH SELF STRIPES	[Color swatches: grey, black, dark blue]
COTTON RICH STRETCH	[Color swatches: grey, black, white]
PURE COTTON	[Color swatches: white]
PLAIN POLYESTER	[Color swatches: pink, blue, black, white]



06 **NADIA** loose fit top

- woven fabric
- short sleeve

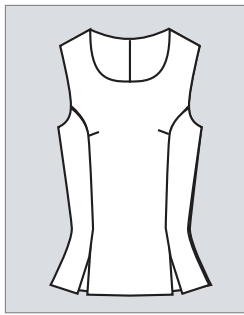
FABRIC	COLOURS
PLATINUM PRINTS	[Color swatches: red, blue, grey, black, white]
COTTON RICH STRIPES	[Color swatches: various stripes]
PLAIN POLYCOTTON	[Color swatches: pink, purple, green, blue, brown, white]
COTTON RICH SELF STRIPES	[Color swatches: grey, black, dark blue]
PURE COTTON	[Color swatches: white]
PLAIN POLYESTER	[Color swatches: pink, blue, black, white]



07 **TESSA** fitted cami

- knit fabric
- sleeveless

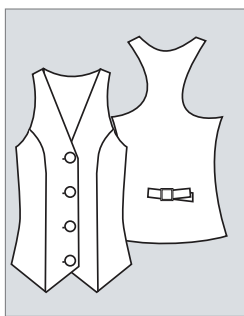
FABRIC	COLOURS
COTTON LYCRA	[Color swatches: white, black]



08 **LILLY** fitted top

- woven fabric
- sleeveless

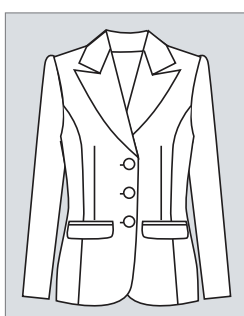
FABRIC	COLOURS
PLATINUM PRINTS	
COTTON RICH STRIPES	
PLAIN POLYCOTTON	
MECHANICAL STRETCH	
SOFT TOUCH POLYVISCOSE	
POLY SPANDEX STRETCH	



09 **KIRSTEN** fitted waistcoat

- suiting fabric
- sleeveless

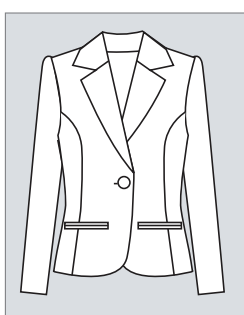
FABRIC	COLOURS
MECHANICAL STRETCH	
SOFT TOUCH POLYVISCOSE	
POLY SPANDEX STRETCH	



10 **AILEEN** fitted jacket

- suiting fabric
- long sleeve
- fully lined

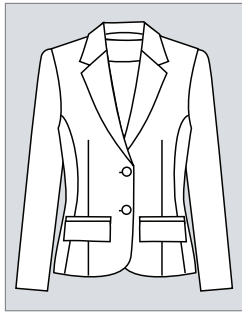
FABRIC	COLOURS
MECHANICAL STRETCH	
SOFT TOUCH POLYVISCOSE	
POLY SPANDEX STRETCH	



11 **ROSA** fitted jacket

- suiting fabric
- long sleeve
- fully lined

FABRIC	COLOURS
MECHANICAL STRETCH	
SOFT TOUCH POLYVISCOSE	
POLY SPANDEX STRETCH	



12 **EMMA** fitted jacket

- suiting fabric
- long sleeve
- fully lined

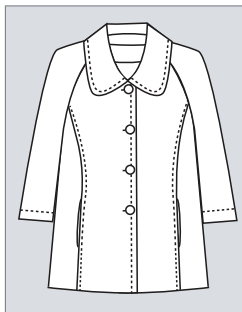
FABRIC	COLOURS
MECHANICAL STRETCH	
SOFT TOUCH POLYVISCOSE	
POLY SPANDEX STRETCH	



13 **LEAH** fitted jacket

- suiting fabric
- 3/4 sleeve
- unlined

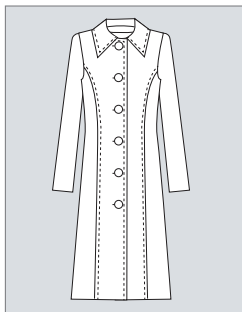
FABRIC	COLOURS
MECHANICAL STRETCH	
SOFT TOUCH POLYVISCOSE	
POLY SPANDEX STRETCH	



14 **SWEETPEA** fit & flare coat

- melton fabric
- 3/4 sleeve
- fully lined

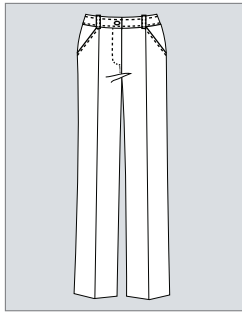
FABRIC	COLOURS
MELTON	



15 **MONIQUE** classic fit coat

- melton fabric
- long sleeve
- fully lined

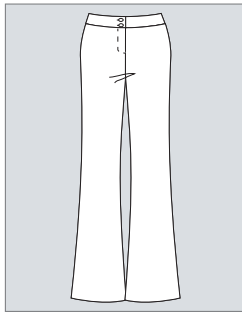
FABRIC	COLOURS
MELTON	



16 **NOLEEN** fitted pants

- suiting fabric
- regular leg
- 106cm outside leg length
- high waisted

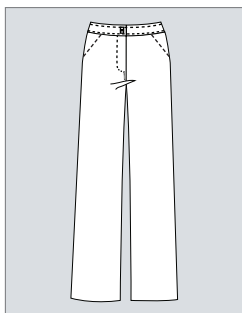
FABRIC	COLOURS						
MECHANICAL STRETCH	White	Gold	Blue	Green	Dark Blue	Grey	Black
SOFT TOUCH POLYVISCOSE	Dark Blue	Grey	Black				
POLY SPANDEX STRETCH	Dark Blue	Black	Black				



17 **PATRICIA** fitted pants

- suiting fabric
- bootleg
- 106cm outside leg length

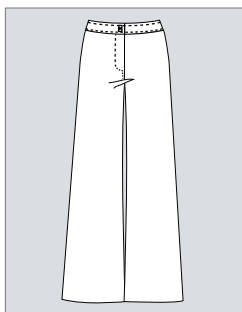
FABRIC	COLOURS						
MECHANICAL STRETCH	White	Gold	Blue	Green	Dark Blue	Grey	Black
SOFT TOUCH POLYVISCOSE	Dark Blue	Grey	Black				
POLY SPANDEX STRETCH	Dark Blue	Black	Black				



18 **ALLY** fitted pants

- suiting fabric
- straight leg
- 106cm outside leg length
- mock pocket detail

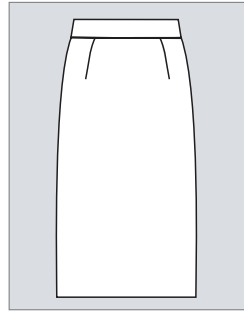
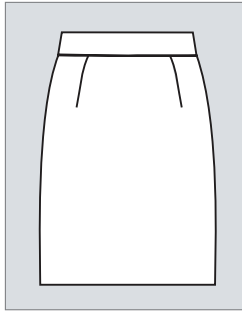
FABRIC	COLOURS						
MECHANICAL STRETCH	White	Gold	Blue	Green	Dark Blue	Grey	Black
SOFT TOUCH POLYVISCOSE	Dark Blue	Grey	Black				
POLY SPANDEX STRETCH	Dark Blue	Black	Black				



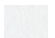




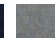

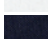
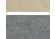

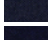
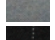

19 **ROMY** fitted pants

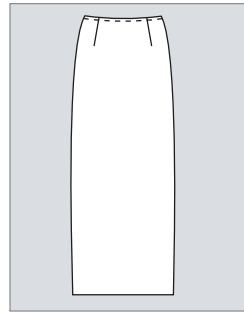
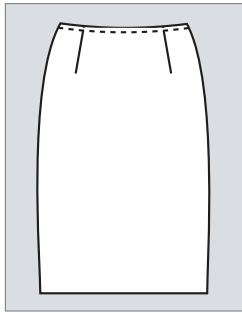
- suiting fabric
- side back elasticated waist
- 106cm outside leg length

FABRIC	COLOURS						
MECHANICAL STRETCH	White	Gold	Blue	Green	Dark Blue	Grey	Black
SOFT TOUCH POLYVISCOSE	Dark Blue	Grey	Black				
POLY SPANDEX STRETCH	Dark Blue	Black	Black				

20 **DIDI** fitted skirt

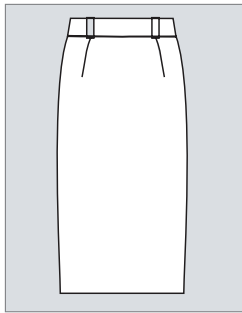
- suiting fabric
- side back elasticated waist
- available in 60cm and 80cm

FABRIC	COLOURS
MECHANICAL STRETCH	      
SOFT TOUCH POLYVISCOSE	  
POLY SPANDEX STRETCH	  

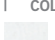






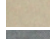


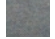

21 **CARMEN** fitted skirt

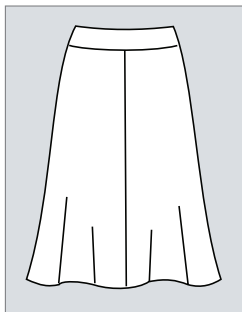
- suiting fabric
- available in 60cm and 90cm
- fully lined

FABRIC	COLOURS
MECHANICAL STRETCH	      
SOFT TOUCH POLYVISCOSE	  
POLY SPANDEX STRETCH	  






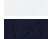
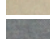




22 **YOLANDA** fitted skirt

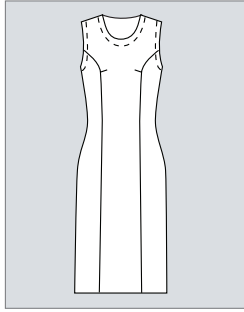
- suiting fabric
- available in 70cm
- pencil skirt
- fully lined

FABRIC	COLOURS
MECHANICAL STRETCH	      
SOFT TOUCH POLYVISCOSE	  
POLY SPANDEX STRETCH	  

23 **LOU** classic fit skirt

- selected platinum prints
- suiting fabric
- available in 72cm
- available with or without top stitching on suiting fabric
- fully lined

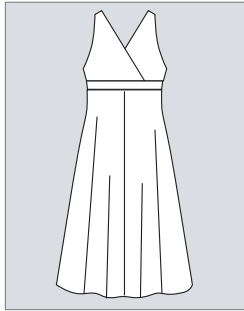
FABRIC	COLOURS
MECHANICAL STRETCH	      
SOFT TOUCH POLYVISCOSE	  
POLY SPANDEX STRETCH	  
PLATINUM PRINTS	    



24 **JENNI** fitted dress

- suiting fabric
- sleeveless
- available with or without topstitching
- fully lined

FABRIC	COLOURS						
MECHANICAL STRETCH							
SOFT TOUCH POLYVISCOSE							
POLY SPANDEX STRETCH							



25 **MARILYN** fit & flare dress

- selected platinum prints
- sleeveless
- empire line

FABRIC	COLOURS				
PLATINUM PRINTS					

